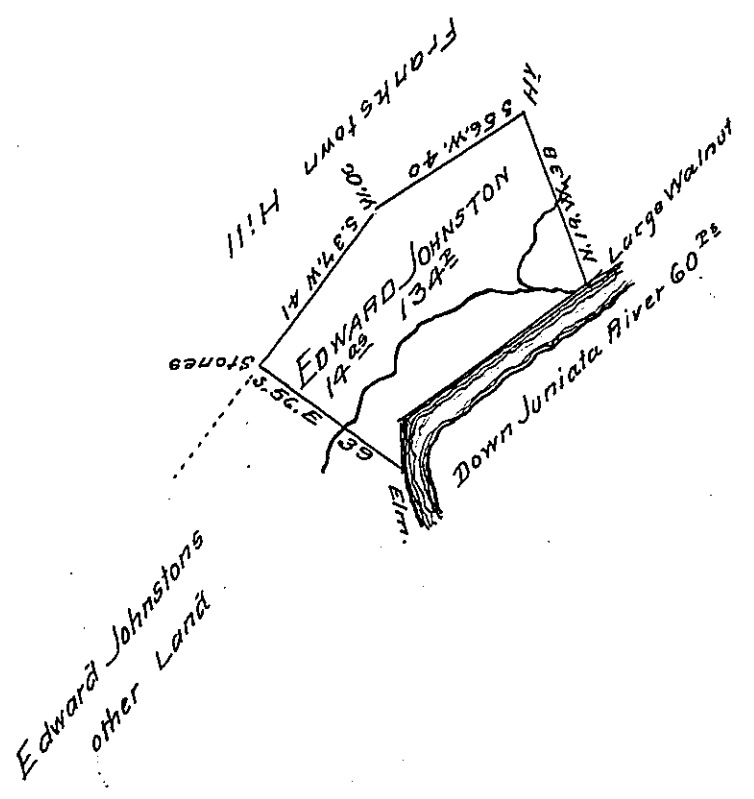


Course & Distance down  
 the River from the Elm  
 to the Walnut  
 N 7 W 10  
 N 52 E 50 Walnut



Situate in Frankstown Township Huntingdon County containing fourteen  
 acres & One hundred & thirty four perches & the usual allowance of six  
 pt Cent for roads. Surveyed the 19<sup>th</sup> day of October 1803

John Canan D.S.

Samuel Cochran Esq<sup>r</sup> S.G.

Note). The above is part of a survey made for Edward Johnston  
 by Thomas Smith Esq<sup>r</sup> on the 31<sup>st</sup> day of May 1777 in pursuance of a  
 Warrant dated the 3<sup>d</sup> day of February 1755 & which contained one  
 hundred & three acres and allowance

J. Canan

IN TESTIMONY that the above is a copy of the original remaining on file in  
 the Department of Internal Affairs of Pennsylvania, made  
 conformably to an Act of Assembly approved the 16th day of  
 February, 1833, I have hereunto set my Hand and caused  
 the Seal of said Department to be affixed at Harrisburg,  
 this fourteenth day of November 1907

*Henry Howell*  
 Secretary of Internal Affairs.